

| Demography | |
|----------------------------------|--------|
| Area (hectares) | 1,309 |
| Total Population (2022) | 22,127 |
| Population density (persons/ha) | 16.90 |
| Number of houses (2022) | 11,557 |
| Number of households (2022) | 11,150 |
| Average household size (persons) | 1.98 |
| Vacancy rate | 3.2% |
| Unemployment rate | 4.4% |

| | Falkirk North | Falkirk |
|--------------------------------|---------------|---------|
| Bad or very bad general health | 9.17% | 7.12% |
| No central heating | 1.94% | 1.30% |

| Population | | |
|--------------------------|--------|--------|
| | No. | % |
| Mid-year population 2012 | 22,083 | Change |
| Mid-year population 2022 | 22,127 | +0.2% |
| Population 2022 | | |
| Males | 11,011 | 49.8% |
| Females | 11,116 | 50.2% |

| | Falkirk North | Falkirk |
|-------|---------------|---------|
| 0-4 | 1,051 | 4.8% |
| 5-11 | 1,672 | 7.6% |
| 12-15 | 990 | 4.5% |
| 16-24 | 2,198 | 9.9% |
| 25-44 | 6,175 | 27.9% |
| 45-59 | 5,034 | 22.7% |
| 60-64 | 1,376 | 6.2% |
| 65-74 | 1,994 | 9.0% |
| 75-84 | 1,159 | 5.2% |
| 85+ | 478 | 2.2% |
| Total | 22,127 | 100.0% |

| Dwellings by Council Tax band 2023 | | | |
|------------------------------------|--------|-------|--------|
| | No. | % | % |
| Band A | 4,988 | 43.2% | 29.0% |
| Band B | 3,130 | 27.1% | 25.3% |
| Band C | 1,293 | 11.2% | 9.3% |
| Band D | 1,026 | 8.9% | 12.3% |
| Band E-H | 1,120 | 9.7% | 24.1% |
| Total | 11,557 | | 100.0% |

| Dwellings by type 2017 | | | |
|------------------------|---------------|---------|--------|
| | Falkirk North | Falkirk | % |
| Flat | 6,087 | 53.8% | 30.6% |
| Terraced | 1,951 | 17.2% | 24.2% |
| Semi Detached | 2,039 | 18.0% | 23.4% |
| Detached and unknown | 1,241 | 11.0% | 21.9% |
| Total | 11,318 | | 100.0% |

| Dwellings 2023 | | | |
|--|---------------|---------|-------|
| | Falkirk North | Falkirk | % |
| Occupied | 11,150 | 96.5% | 97.3% |
| Vacant | 372 | 3.2% | 2.4% |
| Second Homes | 13 | 0.1% | 0.1% |
| Occupied dwellings Exempt from paying council tax | 255 | 2.2% | 1.3% |
| Single Adult council tax discount (percentage of occupied) | 5,471 | 47.3% | 40.2% |
| | 11557 | | |

Health Continued

| Education (22/23 School Leavers) | | |
|--|---------------|-----------|
| School Leavers | Falkirk North | Authority |
| % entering a positive destination | 94.2% | 95.4% |
| % entering Employment | 28.8% | 29.9% |
| % entering Further Education | 28.8% | 21.5% |
| % entering Higher Education | 30.0% | 38.6% |
| % entering Training | 3.8% | 3.2% |
| % entering Voluntary Work | 0.8% | 1.0% |
| % Unemployed Seeking | 3.3% | 2.6% |
| % Unemployed Not Seeking | 1.3% | 1.6% |
| % Personal Skills Development | 2.1% | 1.25% |
| % Not Known | 1.3% | 0.3% |
| % achieving level 4 in Literacy | 95.8% | 96.4% |
| % achieving level 5 in Literacy | 76.3% | 84.3% |
| % achieving level 4 in Numeracy | 95.0% | 95.7% |
| % achieving level 5 in Numeracy | 72.5% | 78.3% |
| Average total tariff score of lowest attaining 20%* | 156 | 187 |
| Average total tariff score of middle attaining 60%* | 750 | 921 |
| Average total tariff score of highest attaining 20%* | 1848 | 2056 |

*these figures may relate to a small number of pupils and should be interpreted with caution

| Employment | | |
|---|---------------|---------|
| | Falkirk North | Falkirk |
| | % | % |
| Primary | 1.4% | 1.3% |
| Manufacturing | 11.5% | 10.1% |
| Construction | 5.2% | 6.5% |
| Wholesale, Retail and Motor | 28.9% | 13.7% |
| Transport, Storage and Communication | 8.4% | 5.7% |
| Accommodation and Food | 9.3% | 7.2% |
| Financial and Property | 0.9% | 1.4% |
| Professional, Scientific and Administration | 5.6% | 10.0% |
| Public Services | 22.9% | 40.5% |
| Other | 5.9% | 1.0% |

| Ethnicity (2022 Census) | | |
|-------------------------|---------------|------------|
| | Falkirk North | Falkirk C. |
| White | 93.8% | 96.5% |
| Pakistani | 2.2% | 1.1% |
| Indian | 0.7% | 0.4% |
| Chinese | 0.4% | 0.2% |
| Other Asian | 0.6% | 0.3% |
| African | 0.8% | 0.4% |
| Caribbean or Black | 0.1% | 0.1% |
| Other ethnic group | 0.5% | 0.3% |
| Mixed | 0.9% | 0.7% |

| Benefits | | | |
|--------------------------------|---------------|----------------------|-------|
| | Falkirk North | Falkirk | |
| Working age population (16-64) | 14,783 | | |
| Benefits | | | |
| | No. | Per 1,000 population | |
| Employment Support Allowance | 1,027 | 69.48 | 48.9 |
| Income Support | 64 | 4.33 | 2.2 |
| Disability Living Allowance | 371 | 16.78 | 13.8 |
| Carers Allowance | 513 | 23.19 | 16.9 |
| Child Maintenance Allowance | 513 | 23.19 | 12.2 |
| Pension Credit | 624 | 171.77 | 111.0 |

| Unemployment (16-64) | | | |
|----------------------|---------------|---------|------|
| | Falkirk North | Falkirk | |
| | No. | % | % |
| Male | 370 | 4.9% | 3.2% |
| Female | 266 | 3.6% | 2.2% |
| Total | 636 | 4.4% | 2.7% |

| Aged 16-24 | | | |
|---------------------------------|------|-------|-------|
| | No. | % | % |
| Universal Credit | 1586 | 54.9% | 49.8% |
| Single, no child dependant | 876 | 30.3% | 34.5% |
| Single, with child dependant(s) | 115 | 4.0% | 3.7% |
| Couple, no child dependant | 313 | 10.8% | 12.1% |
| Couple, with child dependant(s) | 2890 | | |
| Total | | | |

| Housing Benefit Claimants | | | |
|---------------------------|---------------|---------|-------|
| | Falkirk North | Falkirk | |
| | No. | % | % |
| HB with no Children | 1,254 | 94.9% | 91.7% |
| HB with 1 Child | 48 | 3.6% | 2.2% |
| HB with 2 Children | 11 | 0.8% | 0.6% |

| Deprivation | | | |
|---|---------------|---|------|
| Scottish Index of Multiple Deprivation 2020 | | | |
| | Falkirk North | Falkirk | |
| Datatzones in most deprived 20% Overall | 17 | 35 | |
| % of Falkirk Share | | 48.6% | |
| *No. of datatzones within most deprived 20% by category | | | |
| Income (Most Deprived 8 zones of - | 16 | Employment (Most Deprived 8 zones of - | 17 |
| Falkirk - Bainsford and Langlees | 2.1% | Falkirk - Bainsford and Langlees | 1.6% |
| Falkirk - Camelon East | 2.9% | Falkirk - Bainsford and Langlees | 2.4% |
| Falkirk - Bainsford and Langlees | 3.8% | Falkirk - Camelon East | 2.8% |
| Falkirk - Bainsford and Langlees | 0.08% | Falkirk - Middlefield | 5.2% |
| Falkirk - Bainsford and Langlees | 8.6% | Falkirk - Bainsford and Langlees | 6.1% |
| Falkirk - Middlefield | 8.8% | Falkirk - Bainsford and Langlees | 7.9% |
| Falkirk - Grahamston | 10.2% | Falkirk - Grahamston | 7.9% |
| Falkirk - Merchiston and New Carron Village | 12.7% | Falkirk - Grahamston | 8.3% |
| Education (Most Deprived 8 zones of - | 16 | Crime (Most Deprived 8 zones of - | 19 |
| Falkirk - Bainsford and Langlees | 0.3% | Falkirk - Grahamston | 0.4% |
| Falkirk - Bainsford and Langlees | 1.9% | Falkirk - Merchiston and New Carron Village | 0.5% |
| Falkirk - Camelon East | 5.7% | Falkirk - Grahamston | 0.9% |
| Falkirk - Camelon East | 5.9% | Falkirk - Bainsford and Langlees | 1.1% |
| Falkirk - Bainsford and Langlees | 5.9% | Falkirk - Town Centre and Callendar Park | 1.4% |
| Falkirk - Camelon West | 6.5% | Falkirk - Camelon East | 2.6% |
| Falkirk - Camelon West | 6.8% | Falkirk - Grahamston | 5.8% |
| Falkirk - Bainsford and Langlees | 9.1% | Falkirk - Camelon East | 6.1% |
| Access | 2 | | |
| High Bonnybridge and Greenhill | 8.9% | | |
| Falkirk - Bainsford and Langlees | 15.3% | | |

The percentages above show where the datatzone sits within the SIMD - 1 (1% / Most Deprived) / 6976 (100% / Least Deprived)

| | |
|--|-------|
| Population aged 0-24 within the most 20% deprived areas | 3239 |
| % of young people (0-24) living in most 20% deprived areas | 54.8% |

| Historical SIMD Rankings* | | | |
|----------------------------------|------|------|------|
| Datatzone | 2020 | 2016 | 2012 |
| Falkirk - Bainsford and Langlees | 39 | 80 | 253 |

Datatzones are ranked from 1 most deprived to 6,976 least deprived in Scotland

The datatzone S01009126 (Falkirk - Bainsford and Langlees) in Falkirk High School Catchment falls within the most 20% deprived areas in Scotland and is placed 0.6% in the Index.

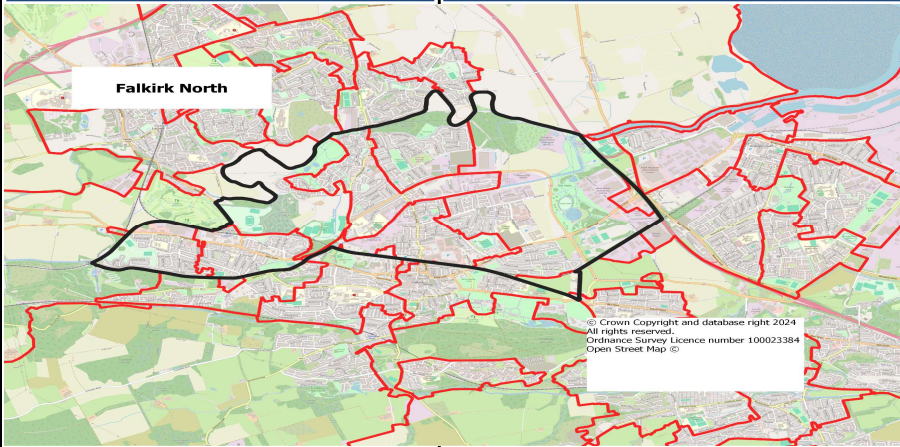
INCOME
37% of people are income deprived.EMPLOYMENT
29% of people are employment deprived.HEALTH
32% of people are prescribed drugs for anxiety, depression or psychosis.EDUCATION
School attendance is 64%. 23% of 16-19 year olds are not in full time education, employment or training. 0% of 17-21 year olds have entered university.

| FSM Criteria | | | |
|--|---------------|---------|-------|
| | Falkirk North | Falkirk | |
| CTC only income < £19,995 | | 1.4% | 0.9% |
| Income Based Job Seekers Allowance | | 0.1% | 0.1% |
| Income Related Employment and Support Allowance | | 7.3% | 7.2% |
| Income Support | | 4.9% | 5.2% |
| Max CTC/Max WTC with income <£9,552 | | 1.1% | 1.0% |
| Universal Credit - Monthly earned income of not more than £796 | | 85.2% | 85.3% |
| Use with HQ approval only - Discretionary | | 0.0% | 0.3% |

| Health Statistics | | | |
|---|---------------|---------|----------|
| | Falkirk North | Falkirk | Scotland |
| Healthy Birth Weight | % | % | % |
| Falkirk-Bainsford & Langlees | 81.8 | 80.7 | 80.9 |
| Falkirk-Merchiston & New Carron Village | 80.4 | | |
| Falkirk-Grahamston | 85.4 | | |
| Falkirk-Middlefield | 83.6 | | |
| Falkirk-Town Centre & Callendar Park | 72.7 | | |
| Falkirk-Bantaskin | 83.3 | | |
| Falkirk-Tamfourhill | 71.9 | | |

| Babies exclusively breastfed at 6-8 weeks | | | |
|---|-------|------|------|
| | % | % | % |
| Falkirk-Bainsford & Langlees | 16.50 | | |
| Falkirk-Merchiston & New Carron Village | 28.70 | 23.6 | 32.0 |
| Falkirk-Grahamston | 23.50 | | |
| Falkirk-Middlefield | 15.80 | | |
| Falkirk-Town Centre & Callendar Park | 31.9 | | |

| | | | | | | | | | | | | | | |
|--|---------|---------------|-------------|---------|-------|------------------------------------|-------|------|------|---------------------|------|--|--|--|
| Child dental health in primary 1 | | | % | % | % | BH with 3+ Children* | 8 | 0.6% | 0.2% | Falkirk-Bantaskin | 36.1 | | | |
| Falkirk-Bainsford & Langlees | 58.1 | 75.5 | 73.6 | | | *may be higher due suppressed data | 1,321 | | | Falkirk-Tamfourhill | 17.6 | | | |
| Falkirk-Merchiston & New Carron Village | 75.6 | | | | | | | | | | | | | |
| Falkirk-Grahamston | 75 | | | | | | | | | | | | | |
| Falkirk-Middlefield | 71.7 | | | | | | | | | | | | | |
| Falkirk-Town Centre & Callendar Park | 64.3 | | | | | | | | | | | | | |
| Falkirk-Bantaskin | 73.1 | | | | | | | | | | | | | |
| Falkirk-Tamfourhill | 80 | | | | | | | | | | | | | |
| Child dental health in primary 7 | | | % | % | % | | | | | | | | | |
| Falkirk-Bainsford & Langlees | 80 | 78.1 | 75.0 | | | | | | | | | | | |
| Falkirk-Merchiston & New Carron Village | 85.7 | | | | | | | | | | | | | |
| Falkirk-Grahamston | 85 | | | | | | | | | | | | | |
| Falkirk-Middlefield | 76.9 | | | | | | | | | | | | | |
| Falkirk-Town Centre & Callendar Park | 82.4 | | | | | | | | | | | | | |
| Falkirk-Bantaskin | 84.6 | | | | | | | | | | | | | |
| Falkirk-Tamfourhill | 77.8 | | | | | | | | | | | | | |
| Uptake of the HPV vaccine in S3 girls | | | % | % | % | | | | | | | | | |
| Falkirk-Bainsford & Langlees | 67.7 | 73.4 | 80.7 | | | | | | | | | | | |
| Falkirk-Merchiston & New Carron Village | 65.4 | | | | | | | | | | | | | |
| Falkirk-Grahamston | 73.8 | | | | | | | | | | | | | |
| Falkirk-Middlefield | 72.6 | | | | | | | | | | | | | |
| Falkirk-Town Centre & Callendar Park | 75.7 | | | | | | | | | | | | | |
| Falkirk-Bantaskin | 81.6 | | | | | | | | | | | | | |
| Falkirk-Tamfourhill | 81.5 | | | | | | | | | | | | | |
| Asthma Patient hospitalisations | | | per 100,000 | | | | | | | | | | | |
| Falkirk-Bainsford & Langlees | 101.8 | 64.6 | 76.2 | | | | | | | | | | | |
| Falkirk-Merchiston & New Carron Village | 59.7 | | | | | | | | | | | | | |
| Falkirk-Grahamston | 51.6 | | | | | | | | | | | | | |
| Falkirk-Middlefield | 80.6 | | | | | | | | | | | | | |
| Falkirk-Town Centre & Callendar Park | 16.1 | | | | | | | | | | | | | |
| Falkirk-Bantaskin | 26.1 | | | | | | | | | | | | | |
| Falkirk-Tamfourhill | 34.7 | | | | | | | | | | | | | |
| Emergency patient hospitalisations | | | per 100,000 | | | | | | | | | | | |
| Falkirk-Bainsford & Langlees | 12719.6 | 8832.3 | 7242.5 | | | | | | | | | | | |
| Falkirk-Merchiston & New Carron Village | 8821 | | | | | | | | | | | | | |
| Falkirk-Grahamston | 9864.3 | | | | | | | | | | | | | |
| Falkirk-Middlefield | 10591.5 | | | | | | | | | | | | | |
| Falkirk-Town Centre & Callendar Park | 8643.9 | | | | | | | | | | | | | |
| Falkirk-Bantaskin | 8025 | | | | | | | | | | | | | |
| Falkirk-Tamfourhill | 10189.5 | | | | | | | | | | | | | |
| Road Traffic accident casualties | | | per 100,000 | | | | | | | | | | | |
| Falkirk-Bainsford & Langlees | 76.9 | 44.9 | 51 | | | | | | | | | | | |
| Falkirk-Merchiston & New Carron Village | 65.9 | | | | | | | | | | | | | |
| Falkirk-Grahamston | 16.9 | | | | | | | | | | | | | |
| Falkirk-Middlefield | 55.7 | | | | | | | | | | | | | |
| Falkirk-Town Centre & Callendar Park | 34.8 | | | | | | | | | | | | | |
| Falkirk-Bantaskin | 48.5 | | | | | | | | | | | | | |
| Falkirk-Tamfourhill | 62.9 | | | | | | | | | | | | | |
| Free School Meals and Clothing Grants 24/25 | | | | | | | | | | | | | | |
| *% of Children Aged 5-15 | | | | | | | | | | | | | | |
| | No. | Falkirk North | % | Falkirk | % | | | | | | | | | |
| Free School Meals | 798 | | 30.0% | | 20.8% | | | | | | | | | |
| Clothing Grants | 835 | | 31.4% | | 25.9% | | | | | | | | | |
| Immunisation uptake at 24 months - 6 in 1 | | | | | | | | | | | | | | |
| Falkirk-Bainsford & Langlees | | | | | | | | | | | | | | |
| Falkirk-Merchiston & New Carron Village | | | | | | | | | | | | | | |
| Falkirk-Grahamston | | | | | | | | | | | | | | |
| Falkirk-Middlefield | | | | | | | | | | | | | | |
| Falkirk-Town Centre & Callendar Park | | | | | | | | | | | | | | |
| Falkirk-Bantaskin | | | | | | | | | | | | | | |
| Falkirk-Tamfourhill | | | | | | | | | | | | | | |
| Immunisation uptake at 24 months - MMR | | | | | | | | | | | | | | |
| Falkirk-Bainsford & Langlees | | | | | | | | | | | | | | |
| Falkirk-Merchiston & New Carron Village | | | | | | | | | | | | | | |
| Falkirk-Grahamston | | | | | | | | | | | | | | |
| Falkirk-Middlefield | | | | | | | | | | | | | | |
| Falkirk-Town Centre & Callendar Park | | | | | | | | | | | | | | |
| Falkirk-Bantaskin | | | | | | | | | | | | | | |
| Falkirk-Tamfourhill | | | | | | | | | | | | | | |
| Developmental concerns at 27-30 months | | | | | | | | | | | | | | |
| Falkirk-Bainsford & Langlees | | | | | | | | | | | | | | |
| Falkirk-Merchiston & New Carron Village | | | | | | | | | | | | | | |
| Falkirk-Grahamston | | | | | | | | | | | | | | |
| Falkirk-Middlefield | | | | | | | | | | | | | | |
| Falkirk-Town Centre & Callendar Park | | | | | | | | | | | | | | |
| Falkirk-Bantaskin | | | | | | | | | | | | | | |
| Falkirk-Tamfourhill | | | | | | | | | | | | | | |



*** Black line represents ward boundary. Red lines represent 2011 intermediate datazones

Sources:
SIMD 2020: Scottish Government
<http://www.gov.scot/Topics/Statistics/SIMD>
Population
<http://www.nrscotland.gov.uk/statistics-and-data>
Dwellings
<http://www.nrscotland.gov.uk/statistics-and-data>
Unemployment and Benefits
<https://www.nomisweb.co.uk/query>
<https://stat-vizore.dwp.gov.uk/webapi/jsf/login.xhtml>
Health Statistics
<https://www.scotpho.org.uk/>

The cells highlighted show if the number or percentage is better or worse than the Falkirk rate, this depends on the indicator.